

BRICS+ CITY LAB II COLLOQUIUM, MOSCOW 2016

Adaptive and Transformative Governance for Large City Development

An aerial night view of the Shanghai skyline, featuring numerous illuminated skyscrapers and the Huangpu River winding through the city. The image is overlaid with a semi-transparent blue filter.

Country Report: Chinese Large Cities And Shanghai 2040

Qiyu Tu

Shanghai Academy of Social Sciences

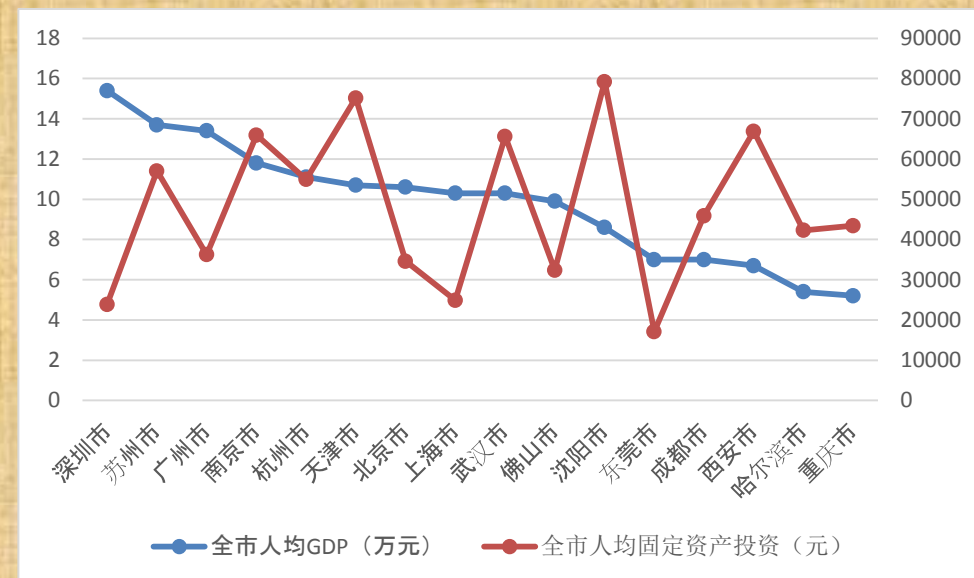
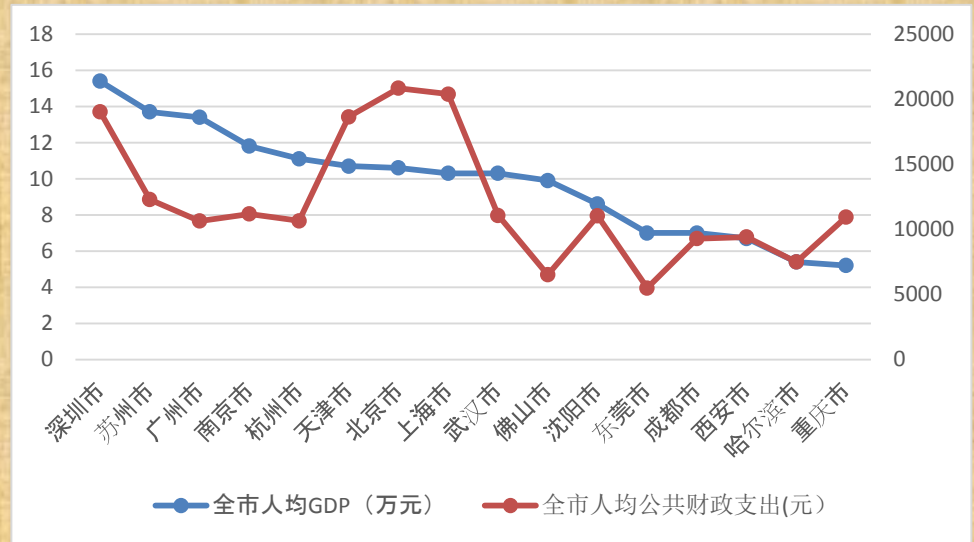
China's Large Cities a panorama view

- 5 million+ Large Cities 16
- 10 million+ Mega Cities 6



China Large Cities

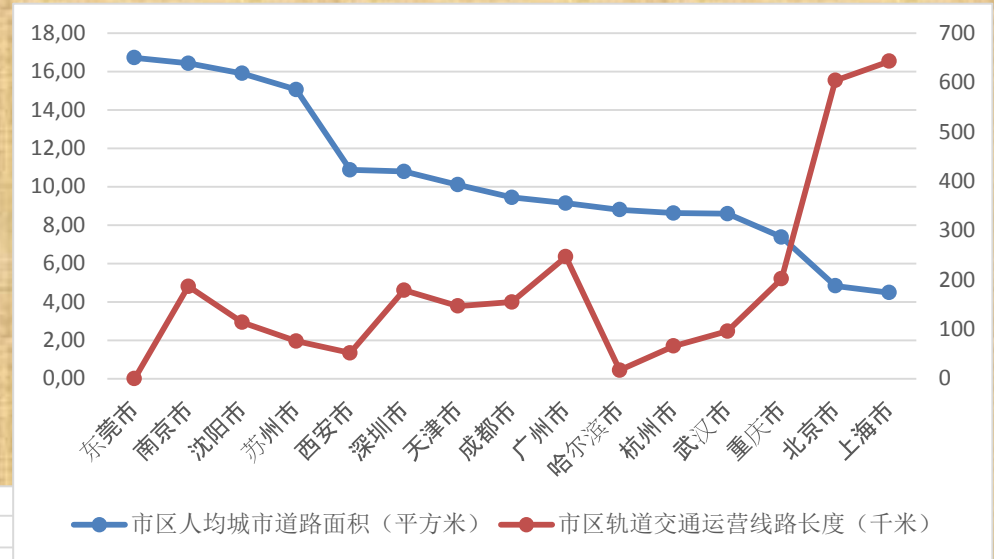
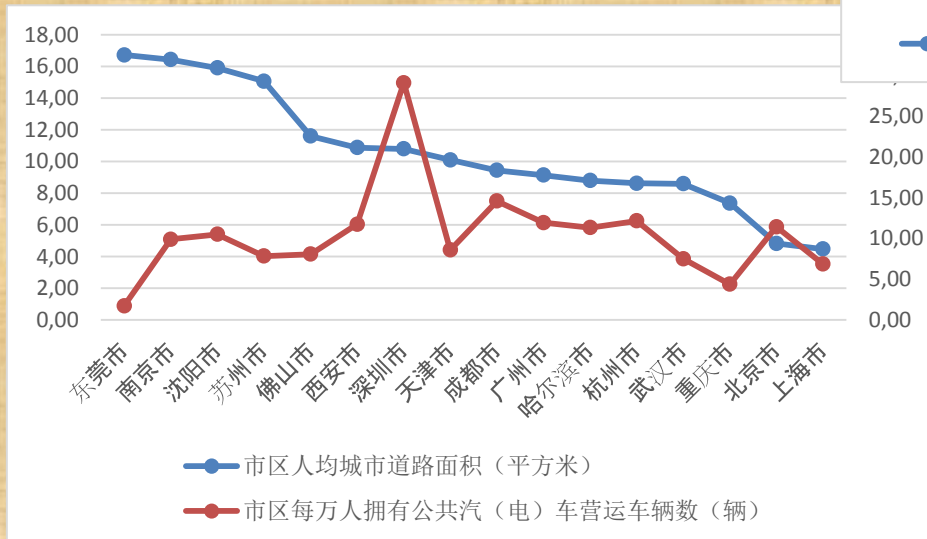
- GDP per capita
- Public expenditure
- Investment



Government Services

Transport Infrastructure

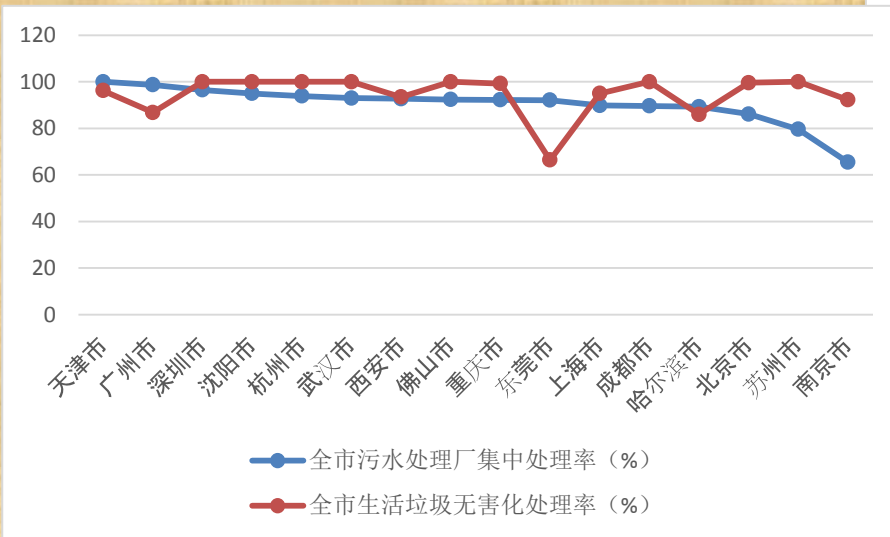
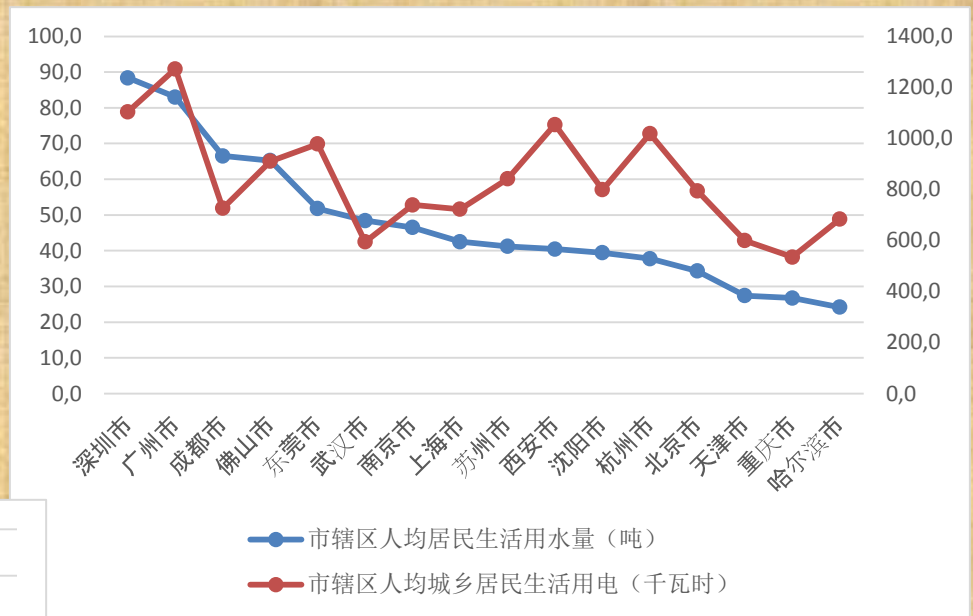
- Road
- Bus
- Metro



Government Services

Utility services

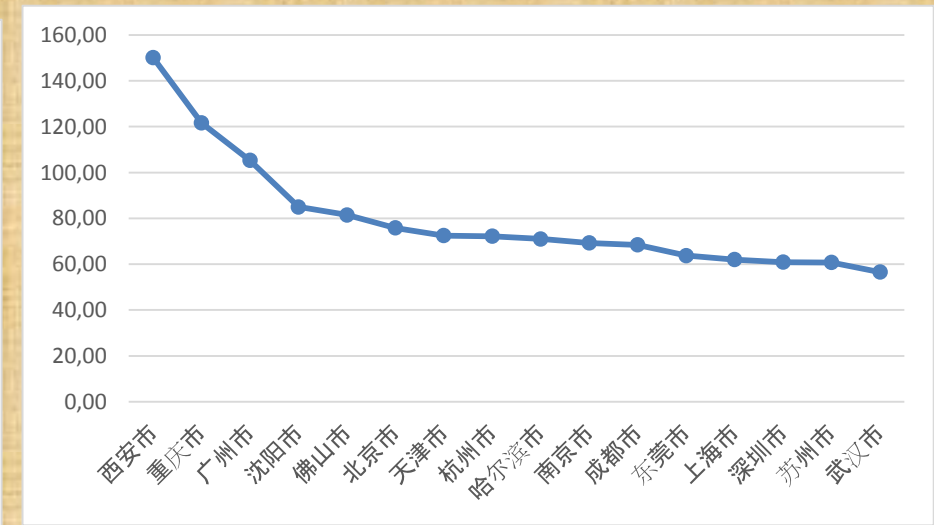
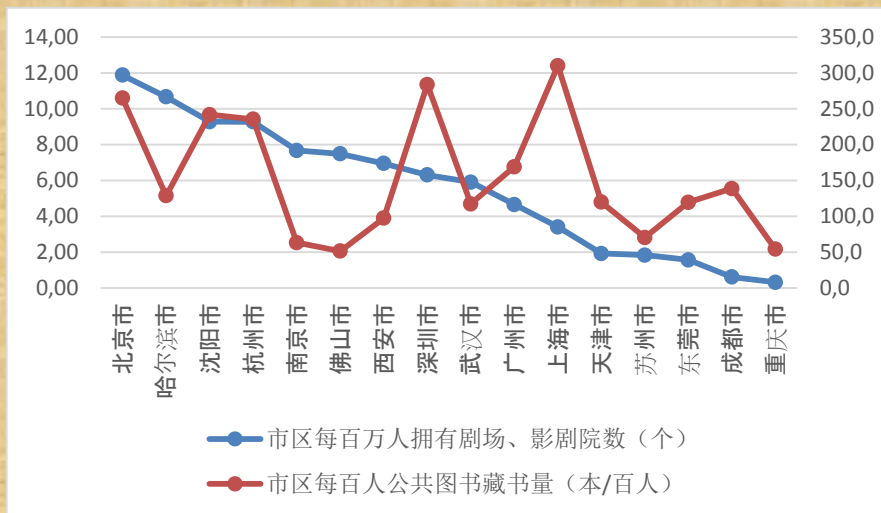
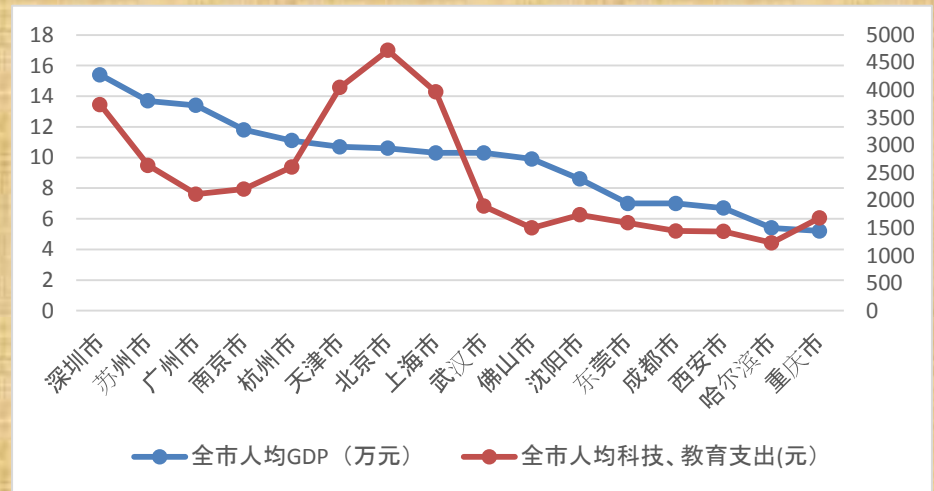
- Water Supply
- Electricity Supply
- Wastes



Government Services

R&D, Education and Culture

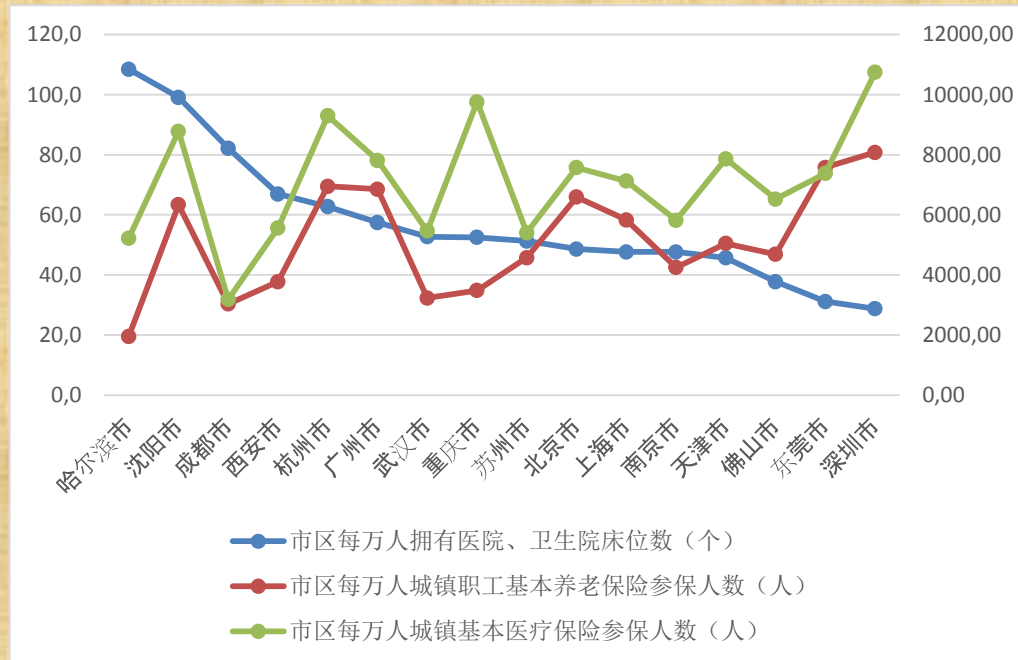
- R&D
- Schools
- Library and cinema



Government Services

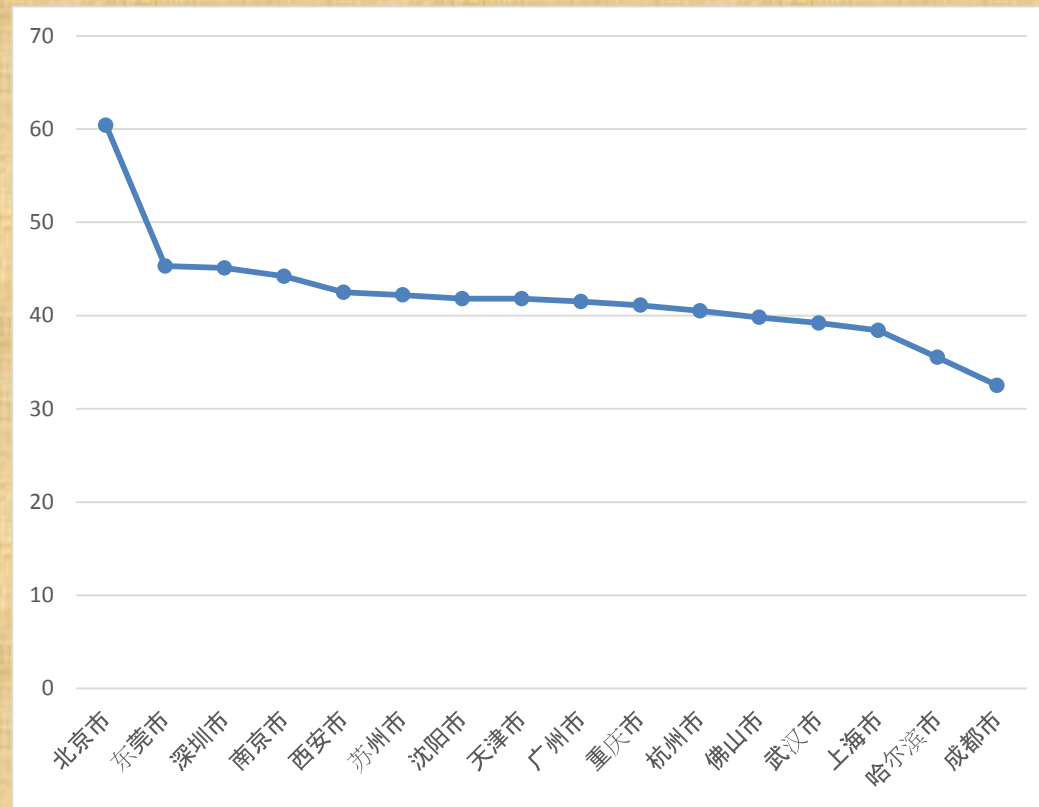
Social Welfare

- Hospital Beds
- Medical care
- Pension coverage

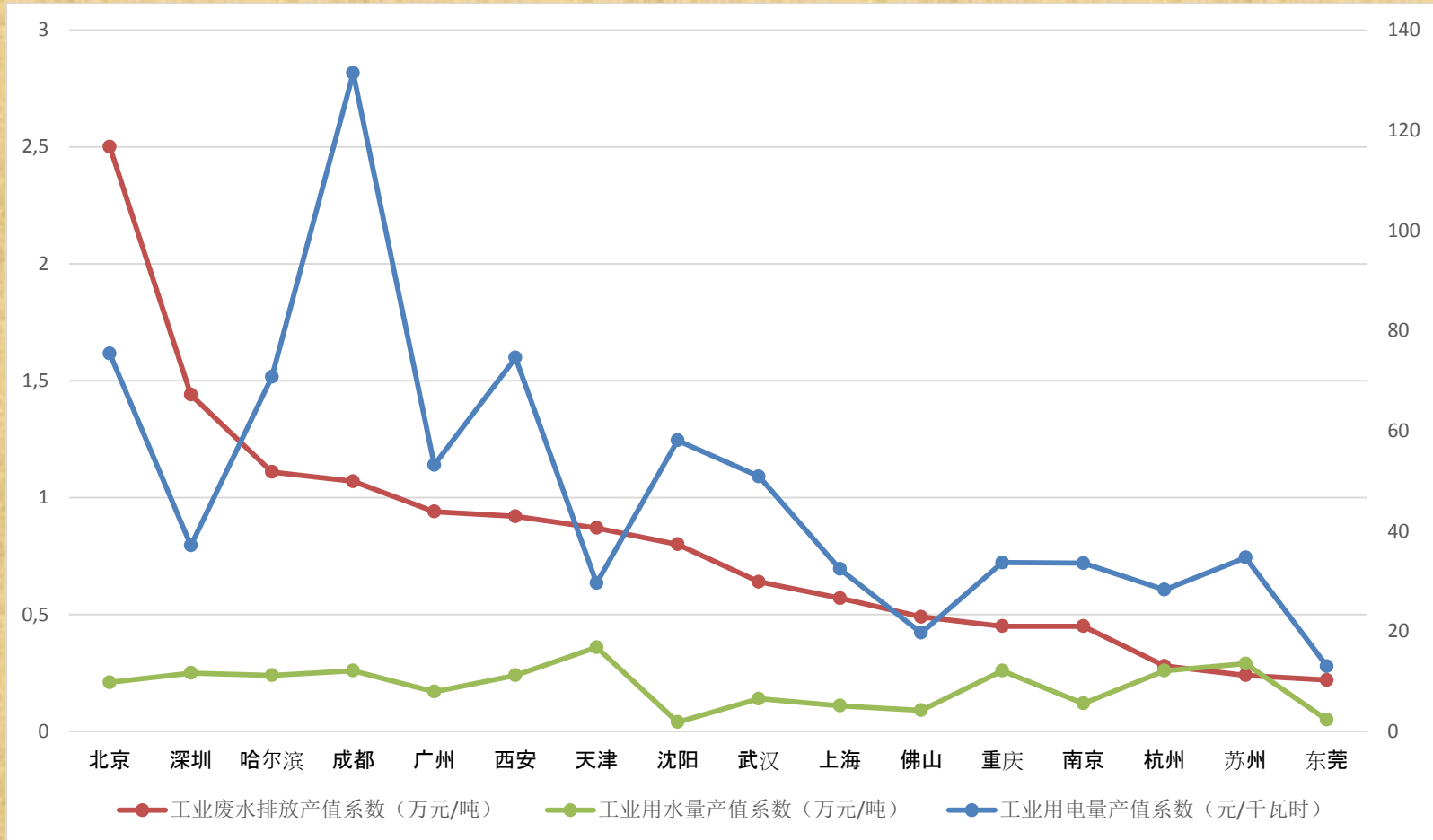


Government Services Environment

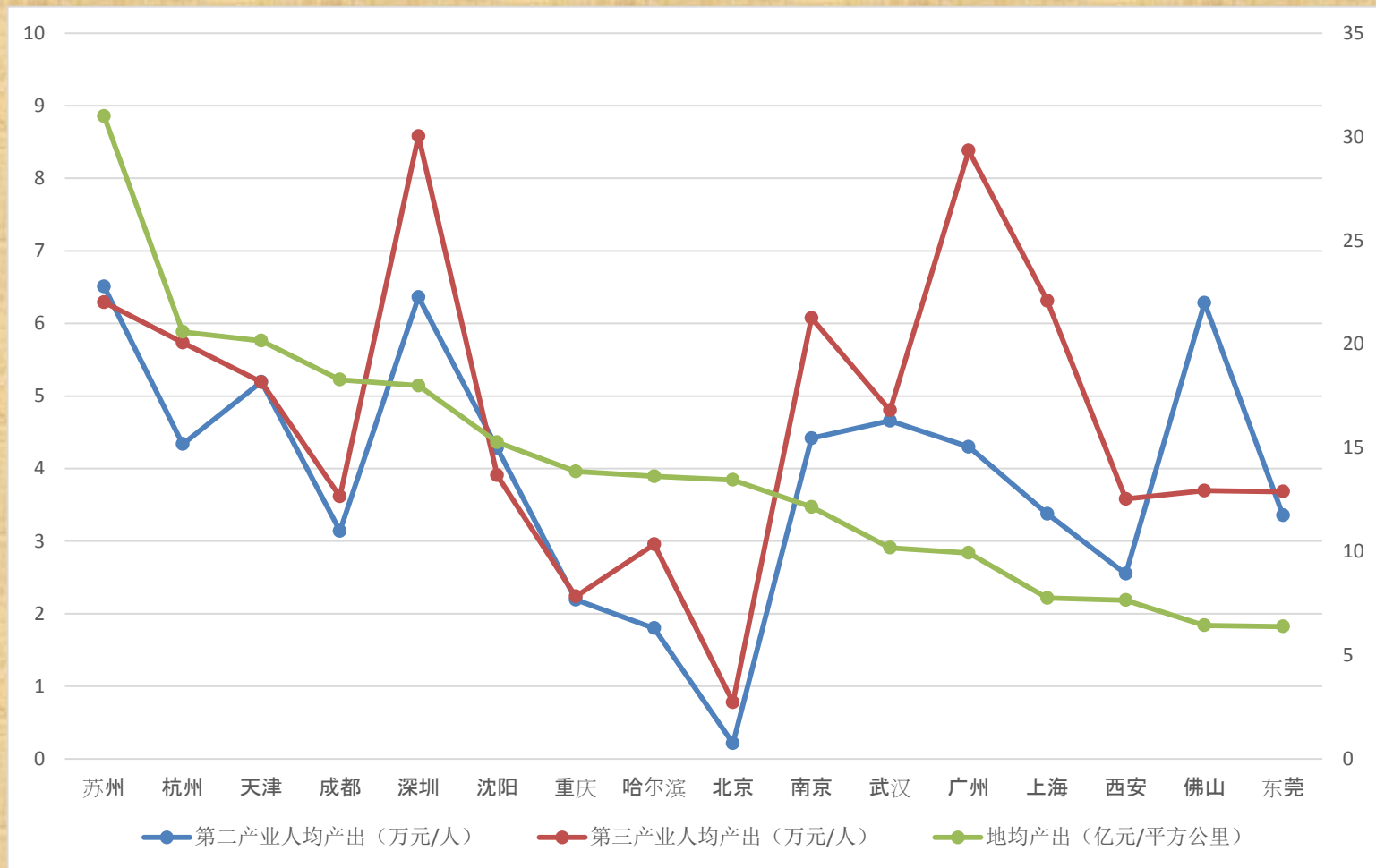
- Green belt



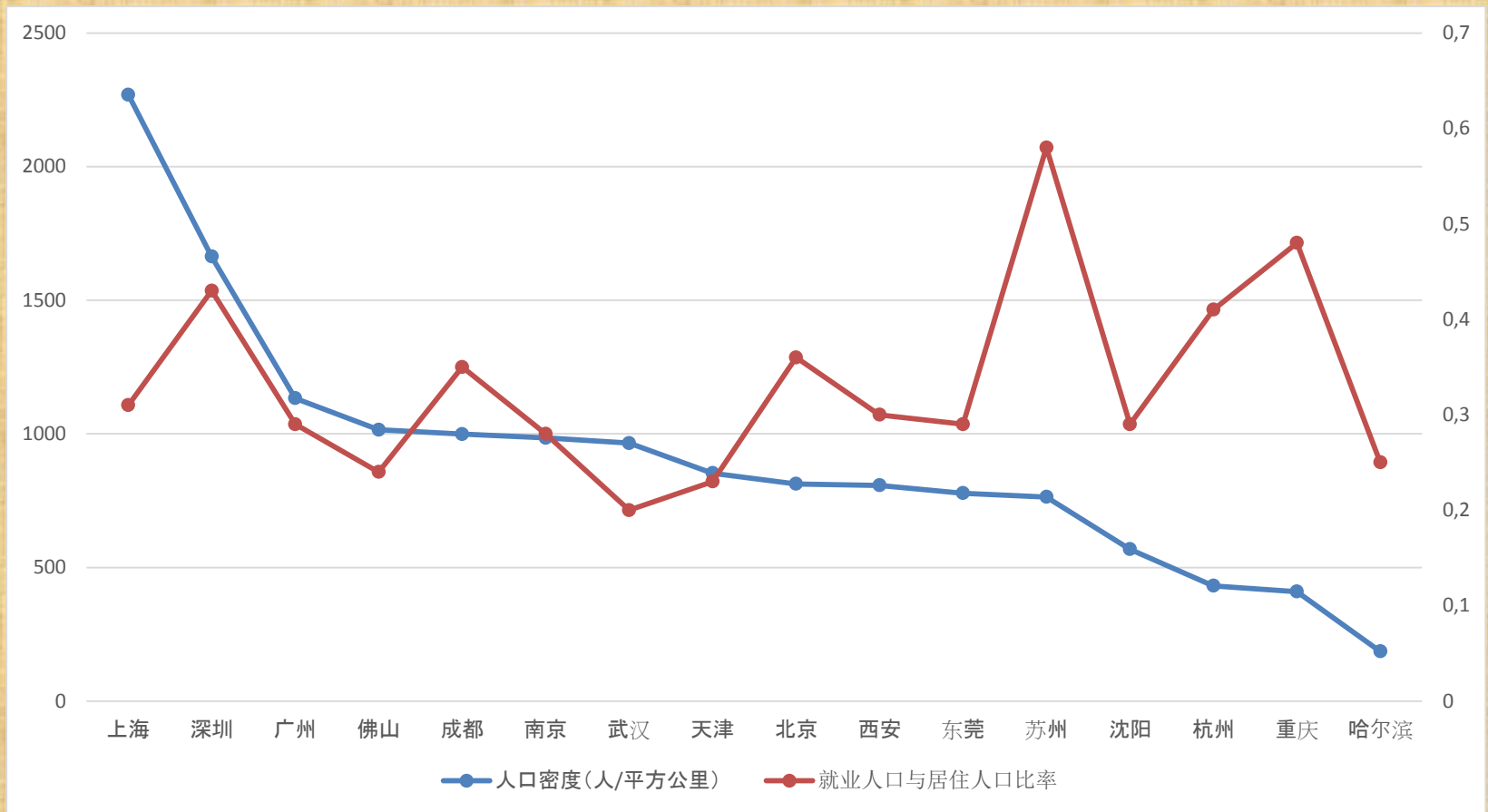
Widely Divided City Performance Environment



Widely Divided City Performance Efficiency



Widely Divided City Performance Equilibrium



- Despite China's urbanization is recognized a contribution to the achievement of certain Millennium goal, Chinese cities, especially large cities, needs to renew their development strategies.
- Shanghai and Beijing are chosen to launch new master plans.

SHANGHAI 2040

- **An Excellent Global City**
- **an innovative city**
- **an ecological city**
- **a humanistic city**



2016/12/7

Global City is the common vision for first class cities

London Plan

Excel among the global cities



New York Plan

A strong and just city



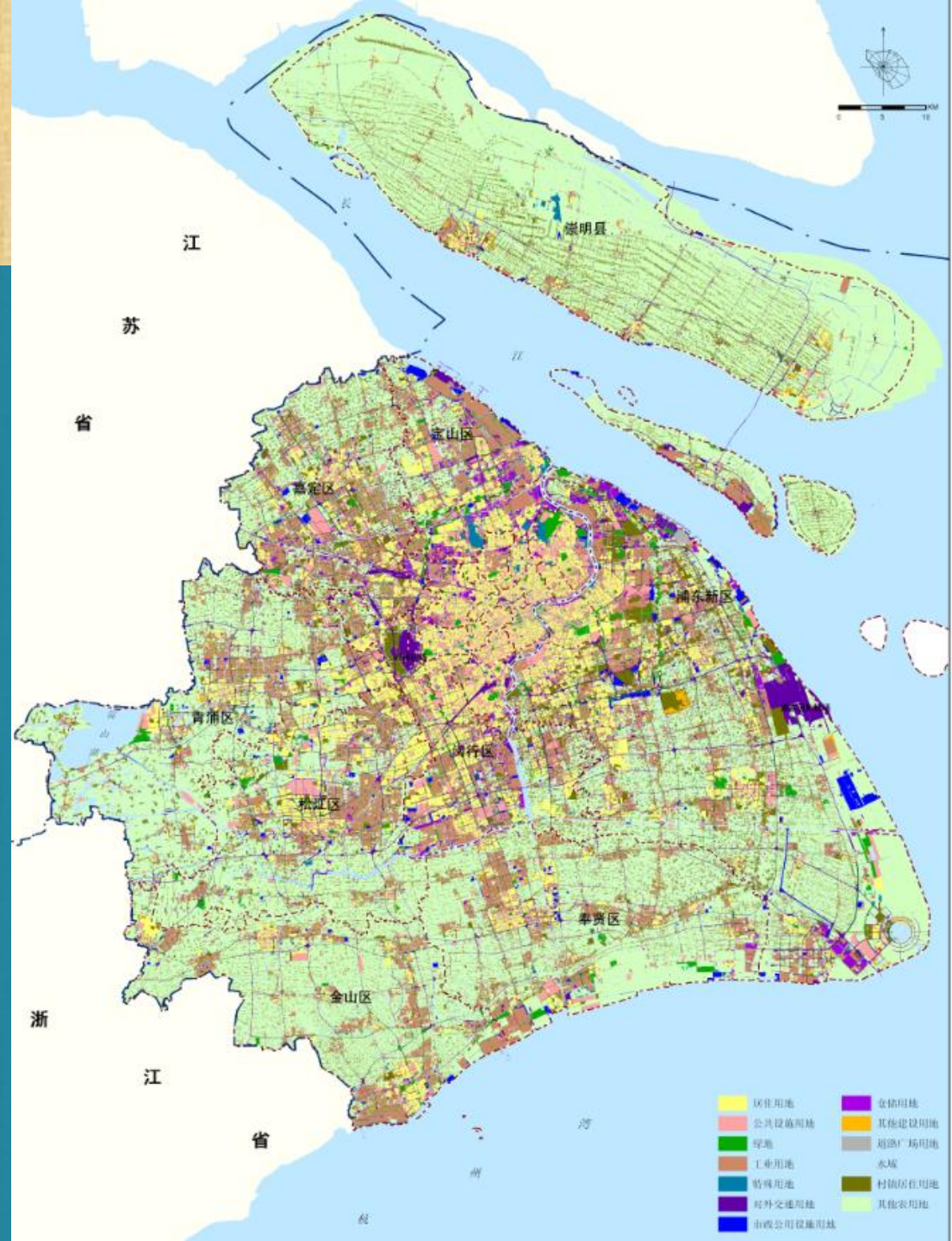
Tokyo Vision

世界一の都市東京へ
(The world best city)



Profile of Shanghai

- Size : 6340 km²
- Population : 24 mil
- GDP : 24965亿元
- GDP per capita : 10.31万元



Major Challenges

(1) Challenges

Innovation challenge

Alternative engine needed for sustainable growth

Spatial challenge

46% of land is utilized

Social Challenge

Floating population & aging city

(2) Trends

Globalization at risk

BRIEXIT, New Silk Road (one belt one road)

Innovation

Smart city, Big data

Inclusive

Human-centric

Shanghai's Response

Strategies

Open

Play the role as key hub of global linkages

Integrated

Pursue integration at City-region scale

sustainable

Draw bottom-lines to urban sprawl

Innovative

Human centric, R&D

inclusive

Participatory planning and co-governance with stakeholders

(1) draw the ceilings

land

Spatially negative growth of the city

Land use ceiling **3200 km²**

population

Migration Control

Population ceiling of 25 mil by 2040

**For the sake of sustainable of Shanghai and for the
balanced development of China**

environment

**Draw green line for eco-space , blue line for rivers and
lakes**

(2) development with quality not scale

Innovation policy

Urban renewal policy

Cultural policy

City-region integration policy

(3) elastic adaptation

Reserve
mechanism

Reserve land for big event or project

Dynamic
adjustment
mechanism

Big data dynamic monitor

Execution-monitoring- evaluation- amendment

A Spatial System of Network and Multi-centers 3 Layers

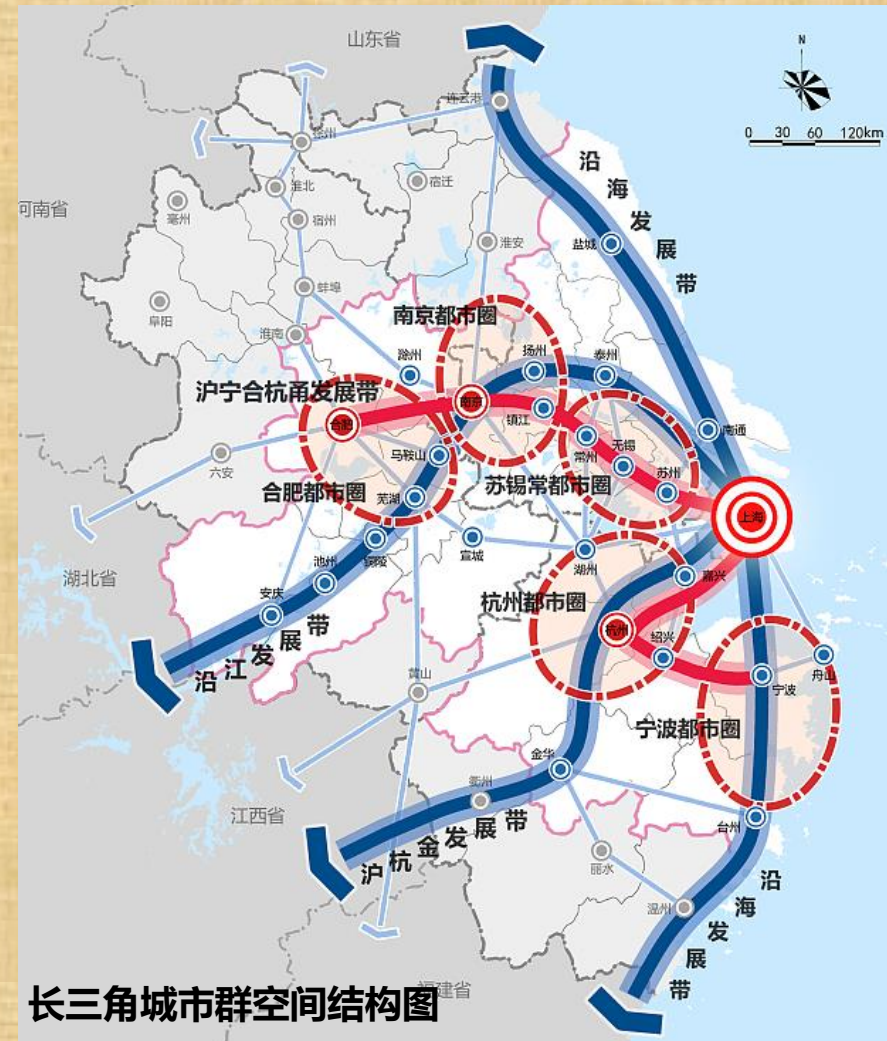
(1) Yangtze River Delta as the biggest megalopolis

Spatial coordination

- ✓ Shanghai Global City
- ✓ 5 Metropolitan regions
- ✓ 3 City Corridors

Functional collaboration

- ✓ Environment
- ✓ Transportation system
- ✓ Urban public facilities



(2) Build Shanghai Metropolitan Region to carry core global functions

Size : 7 Municipalities

Shanghai



Suzhou, Wuxi, Nantong,
Ningbo, Jiaxing and
Zhoushan

Territory : **30,000** km²

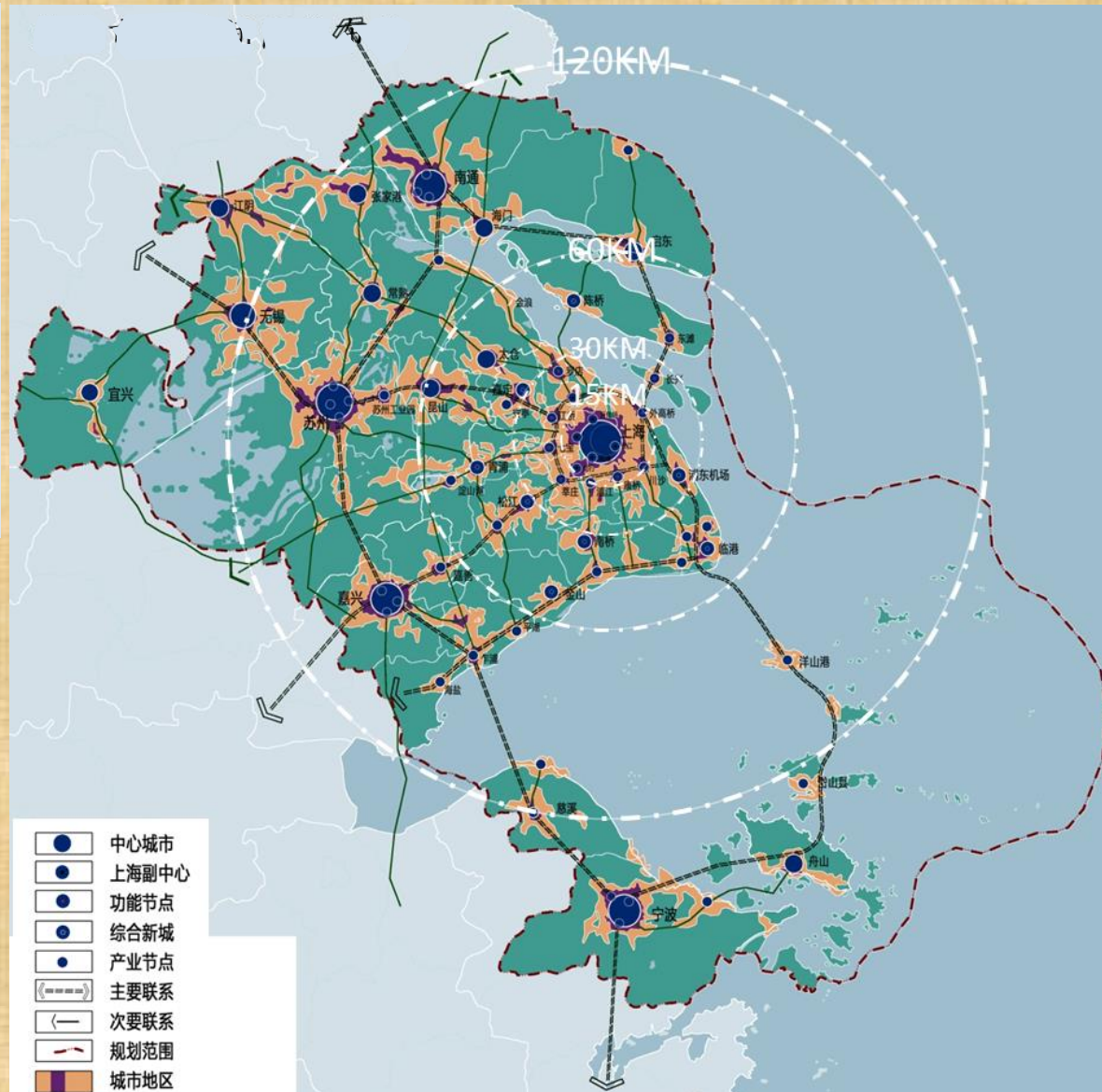
Population : **55 mil**

Functional Integration

Spatial integration

Infrastructure linkage

Environmental co-
management



(3) Constructing city-wide urban-rural system

Central City : 1+ 4 wings

major global city functions

Population dispersion

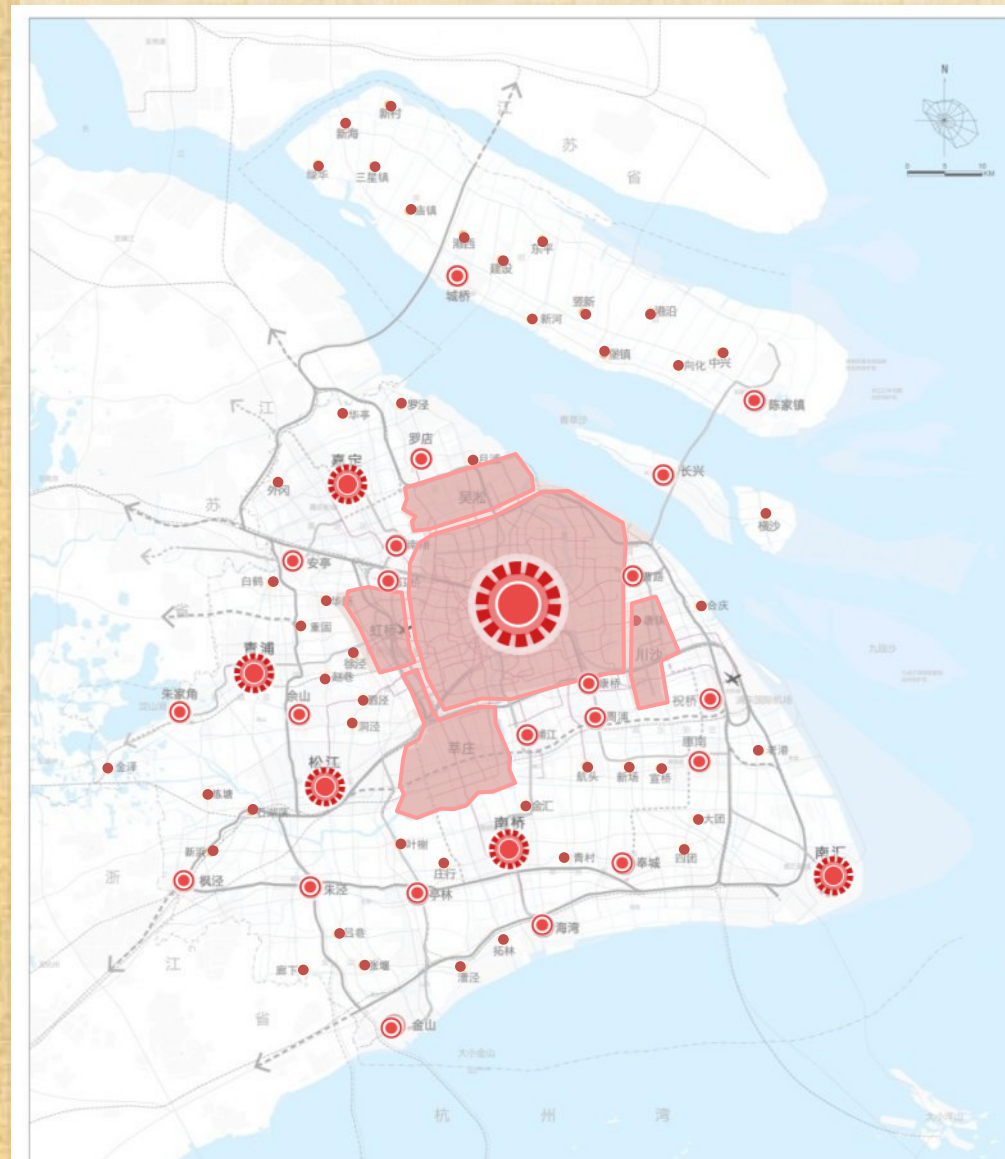
New Cite:5

Accepting central city function and population dispersion

New Town : 10

Community Level Services

Village



Target 1 More Competitive: an innovative city

- Core City of the most populated country with biggest economic size .
- Innovation is the key of city competitiveness, key hub of global linkage of all flows, the node of Scientific innovation



More competitive: an Innovative city

(1) Global hub of transportation

2040, passenger transfer 20-25%

2040, international cargo transfer 15%

2040, international Information hub



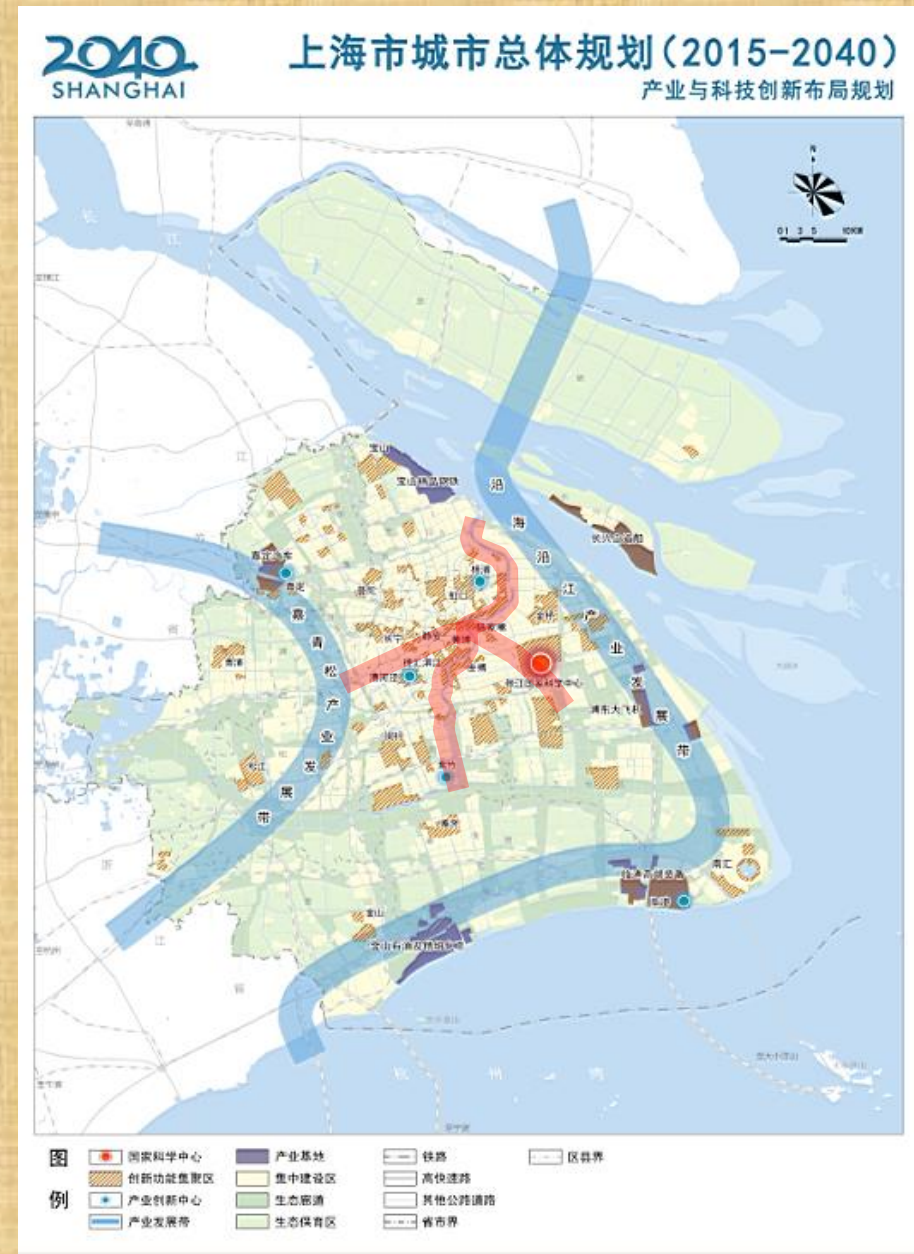
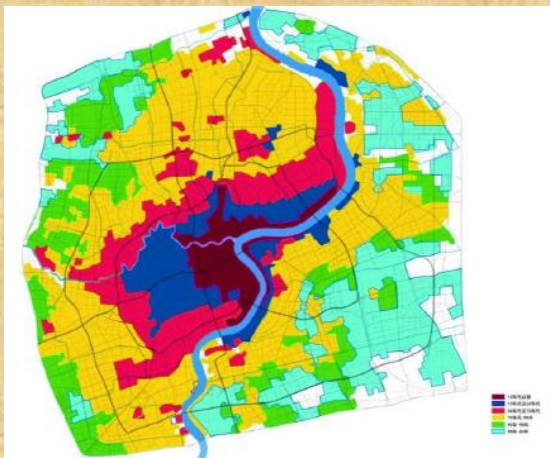
(2) Forming Bases for Global City Core Functions

Central Activities District (CAD) as the expansion of CBD

National Science Center as the central intellectual district (CID)

Innovation Space Plan

Save 150 km² as advanced manufacture industrial park

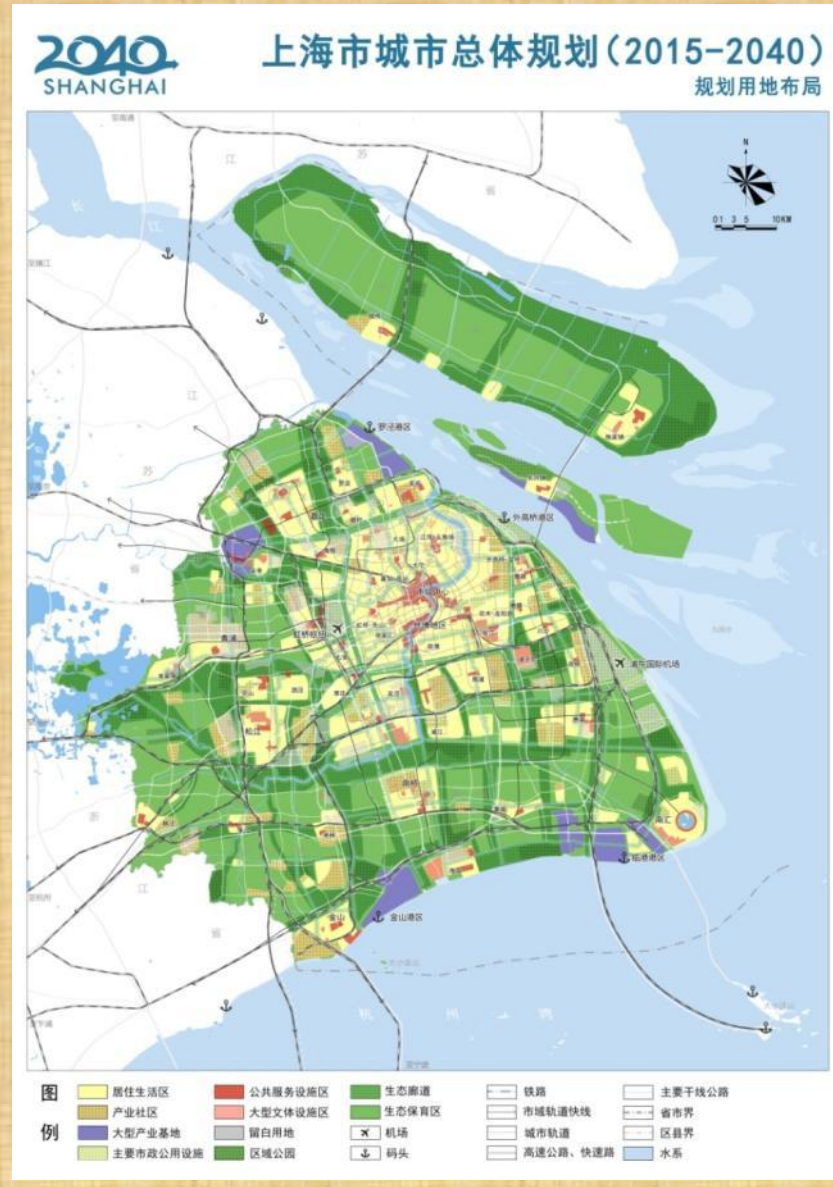
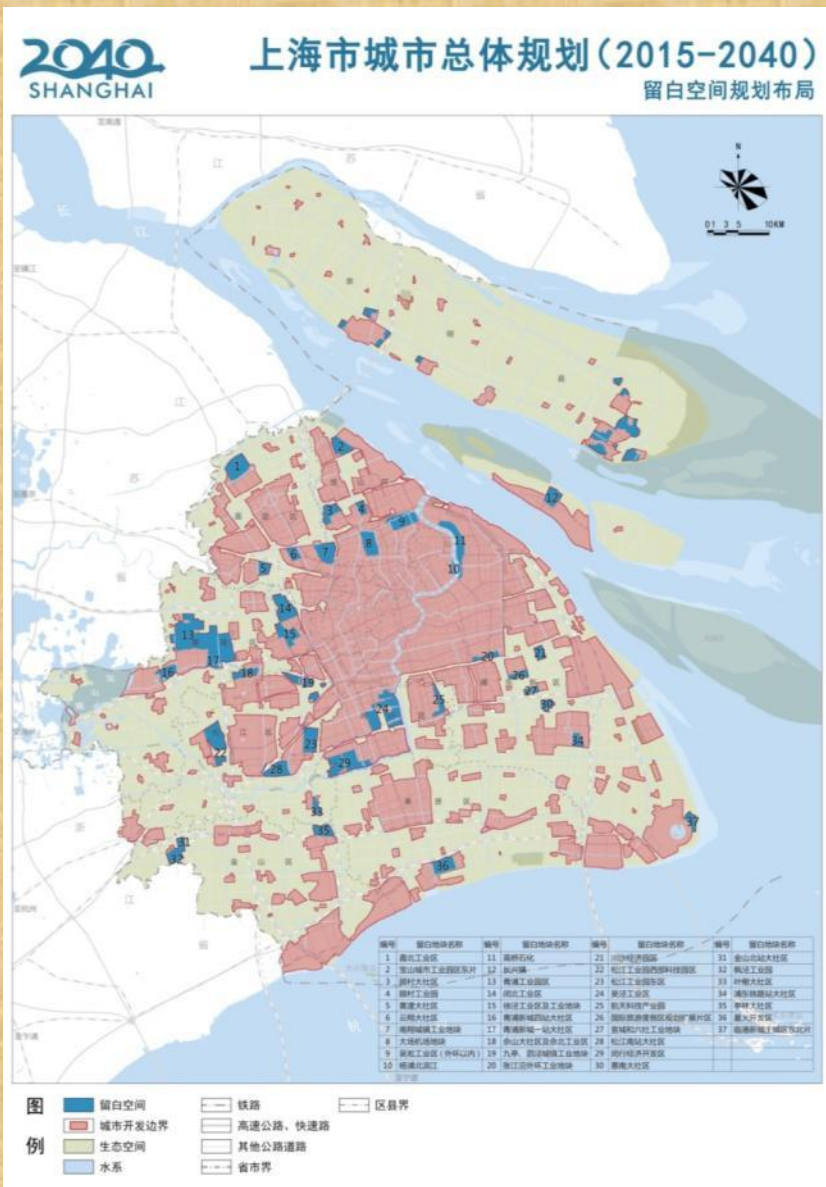


Target 2 More Sustainable : an Ecological City

- Population and Land use both reach the city' s ceiling



More Sustainable Development: an ecological city

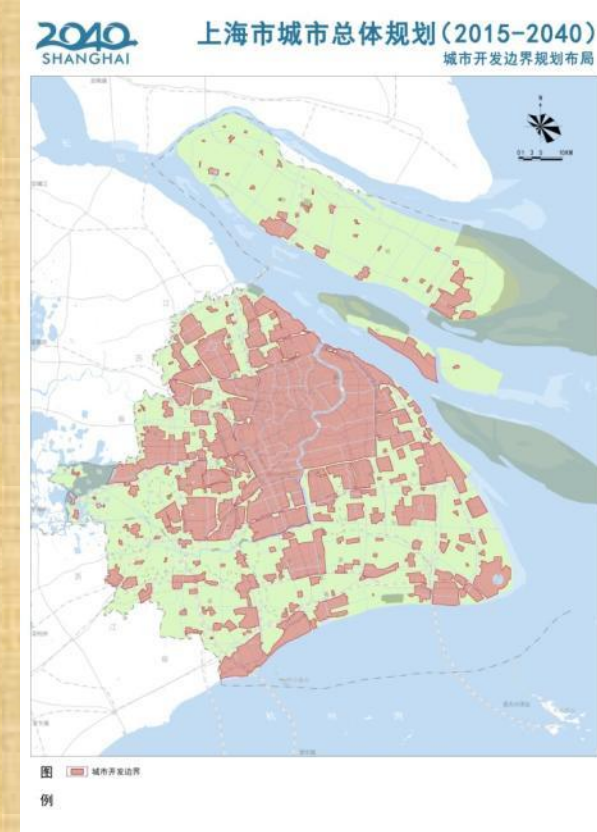


Spatial Control

Redline for ecological space

Redline for agricultural space

Boundary to stop urban sprawl



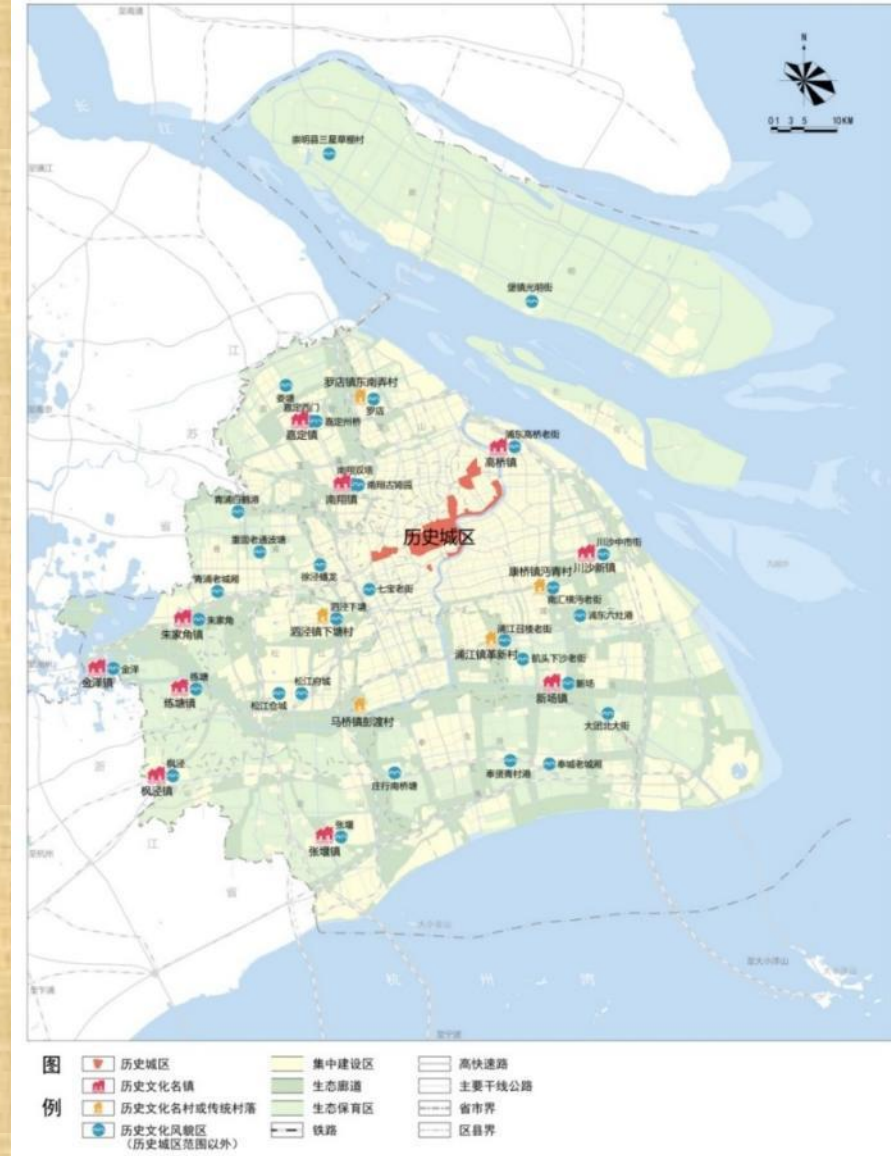
Target 3 More Attractive: a humanistic city

- International cultural influence and citizen happiness are the key reference of success of the city
- Inclusive development and community building



More Attractive: a humanistic city

Heritage Site Conservation



More Attractive: a humanistic city

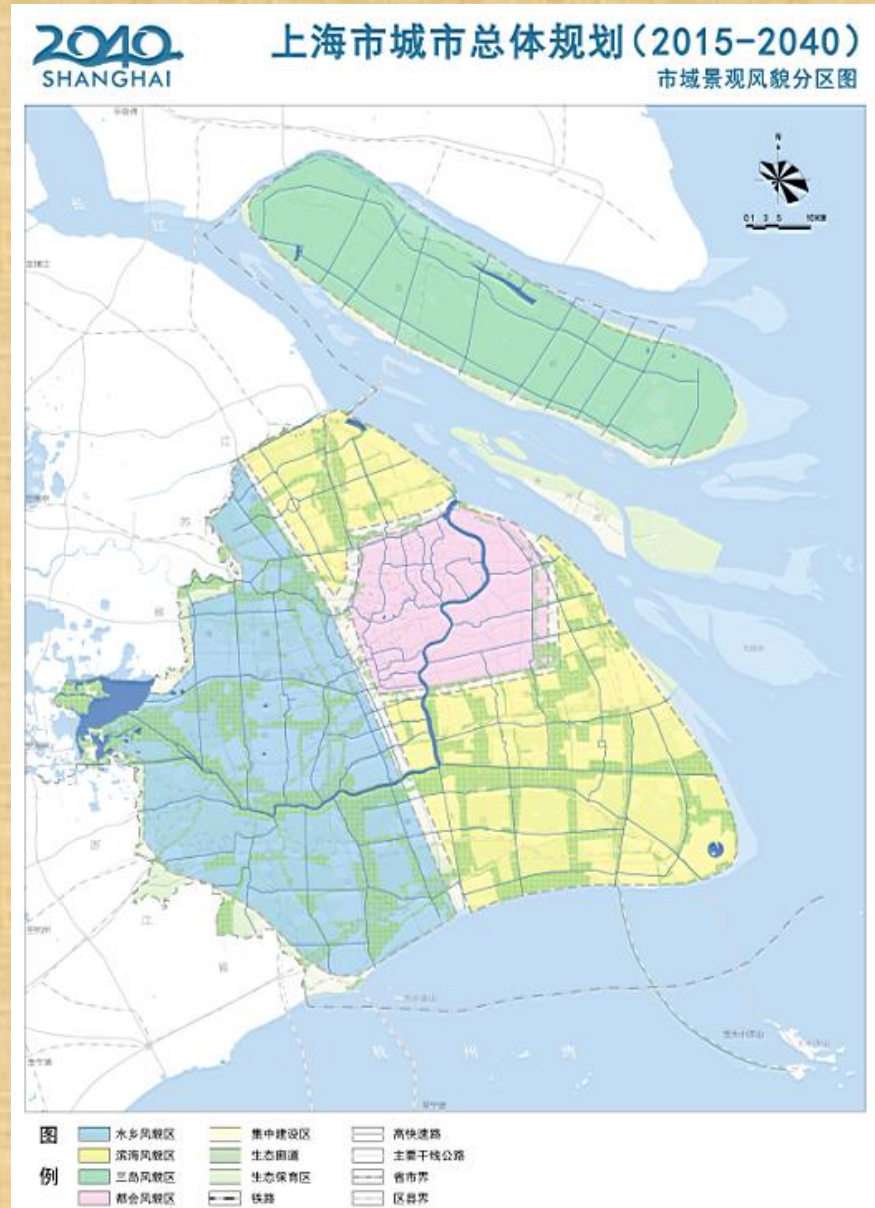
Landscape Designing

Metropolitan features zone

Coastal features zone

Waterside village features zone

Island features zone



15-minute life circle

Introducing **COMMUNITY PLANNER**
position & participatory planning
Semi-diameter: 500 m
Service population: 30,000-40,000
All basic community services
available within 15 minutes walking
distance



城镇社区生活圈建议配置：



公园

3000 平米的社区公园
每 500 米服务半径布局一处社区
公园，面积不小于 3000 平米。



公共
空间

4平米/人的社区公共空间
包括社区公园、小广场、街角绿地
等，实现人均 4 平方米的规划目标。

乡村社区生活圈建议配置：



文化

500 平米的文化活动站
500-1000 米服务半径布局一处



综合

600 平米的综合服务用房
每个行政村设置一处



体育

300 平米的的体育健身点
每 500 米服务半径布局一处社区
公园，面积不小于 3000 平米。

THANK YOU !

